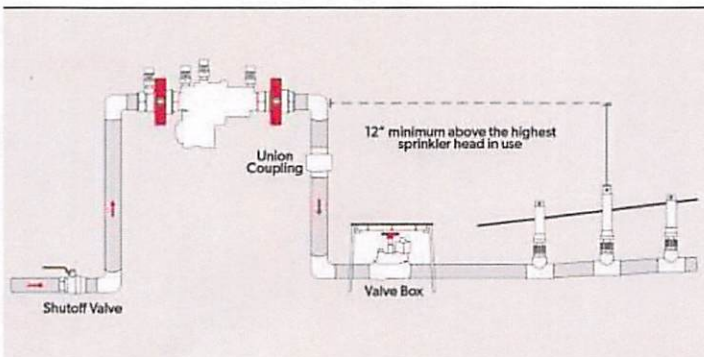


# Customer Service Inspection

- That BEFORE water service is granted and the water meter curb-stop valve is unlocked, a cutoff/shutoff valve has been installed on the customer side of the water meter as described in the District Service Policy Rules and Regulations Section E.20.d.
- That there are no cross connections and no lead in the pipes or soldered pipe joints containing lead of a home/ facility that could potentially contaminate the drinking water or the public water system.
- That all exterior water faucets/hose bibbs have a HOSE BIBB VACUUM BREAKER (HBVB) installed or is designed internally within the faucet per Chapter 6, Section 608.16.4.2 of the International Plumbing Code.
- **That if applicable, a lawn irrigation system (sprinkler system) is installed, a Reduced Pressure Principal Assembly (RPZ) [a type of backflow prevention assembly] is REQUIRED by the District within four (4) feet after the customer cutoff/shutoff valve for the purpose of protecting the public water supply. This device must be tested upon installation and yearly thereafter by a licensed Backflow Prevention Assembly Tester (BPAT). A copy of the installation test results as well as the yearly test results must be sent to Hickory Creek SUD for record keeping.**

RPZ

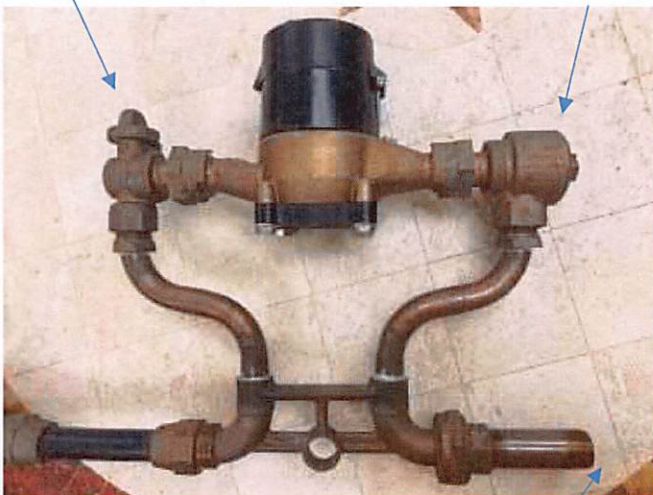


Hose Bibb



HC Shut off

Dual Check



Customer shut off will attach after this point

Hose Bibb on outside faucet

